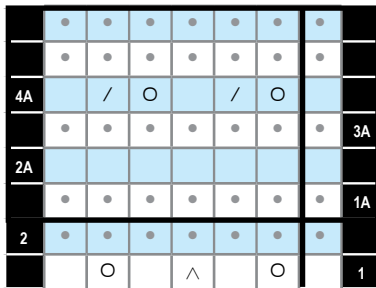


## Knitted Design for Bottom of an Undershirt or Petticoat

Cast on any number of stitches divisible 6 plus 1.

These instructions are given for flat knitting. If you were knitting in the round, knit row 2 and purl row 2A.

Row 1	k1. *yo, k1, [sl1-k2tog-pssol], k1, yo, k1*. Repeat **
Row 2	purl
Repeat rows 1 and 2 until the lace is as long as you want it.	
Row 1A	purl
Row 2A	knit
Row 3A	purl
Row 4A	*k1, yo, k2tog*. Repeat ** k1
Row 5A	purl
Row 6A	puls
Begin knitting undershirt or petticoat.	



### NOTES:

This edging is knitted before beginning the undershirt of petticoat. You will cast on the number of stitches required for your undershirt plus one making sure your stitches are divisible by 6 plus 1. The lace edging is knitted first and then you will continue on to your undershirt or petticoat.